

Guinea-Conakry 2021:

project: Design and study for a 20.000m² – 5T Dry/Hr crumb rubber factory.
Complete project file for tender and contracting.

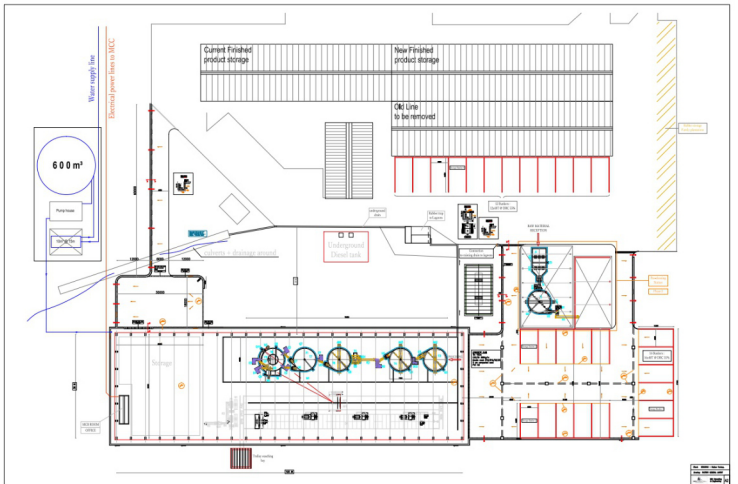
Budget: 4 million US\$ (start of the construction of the project delayed)

STUDY FOR A NEW 5T DR/HR CRUMB RUBBER PROCESSING PLANT.

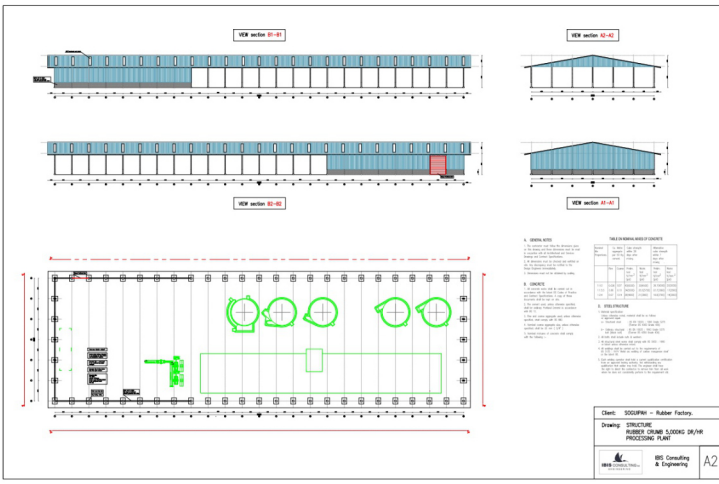
A. DESIGN RUBBER PROCESSING PLANT	V
B. TOPOGRAPHIC & GROUND WORKS SURVEY	V
C. CIVIL & STRUCTURAL WORKS - TECHNICAL DRAWINGS	V
D. CIVIL & STRUCTURAL WORKS - BILL OF QUANTITIES	V
E. TECHNICAL SPECIFICATIONS FOR THE EXECUTION OF WORKS	V
F. ELECTRICAL WORKS – TECHNICAL DRAWINGS.	V
G. ELECTRICAL WORKS – BILL OF QUANTITIES.	V
H. WATER PROVISION AND RECOVERY – TECHNICAL DRAWINGS.	V
I. WATER PROVISION AND RECOVERY – BILL OF QUANTITIES.	V
J. QUOTATIONS, ORDERS & CONTRACT.	
K. PRE-PLANNING & PRE-TIMESCHEDULE.	V
L. PROJECT & SITE MANAGEMENT.	



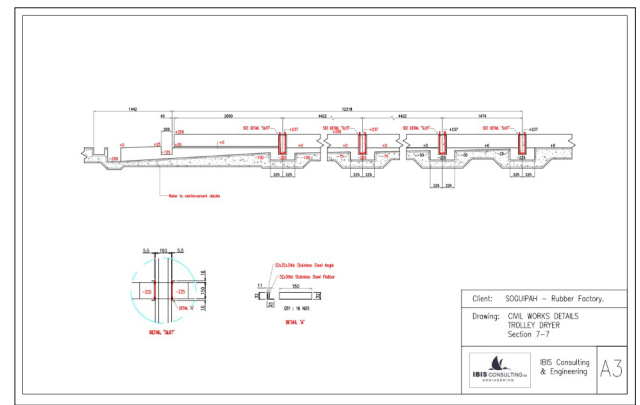
Topographic study & layout proposal



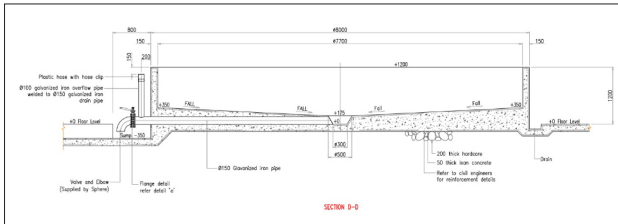
Project proposal - plans & study.



Layout & structural design.



Detailed sections.



Detailed foundation drawings.

Ground works	Unit	Qty	S/Unit	\$
Excavating & ground beams, excavations, backfill and compaction	M ³	200.0		
SLAB	Unit	Qty	S/Unit	\$
1 Concrete 350kg/m ³	M ³	499.2		
Reinforcement	M ²	1,664.0		
Standard formwork	M ²	3,228.0		
ETC layer - polyurethane plastic under slab	M ²			
FOOTINGS STEEL STRUCTURE	Unit	Qty	S/Unit	\$
02 Footings in total	M ³	9.7		
1 Reinforcing (50mm) 120kg/m ³	M ³	96.0		
2 Concrete 350 kg/m ³ - Level has to be verified with laser	M ³	316.0		
3 Standard formwork	M ²	1,876.0		
4 ETC layer - polyurethane plastic under beam	M ²			
Reinforcement	M ²	1,876.0		
*Anchor bolts installation according to specifications contractor tower structure. Installed by 3rd contractor.				
FOUNDATION GROUND BEAMS	Unit	Qty	S/Unit	\$
4x 1.22 m wide	M ³	22.4		
1 Concrete 350kg/m ³	M ³	1,166.5		
2 Reinforcement	M ²	229.4		
3 Standard formwork	M ²	57.4		
4 ETC layer - polyurethane plastic under beam	M ²			
Reinforcement	M ²			

BOQ.